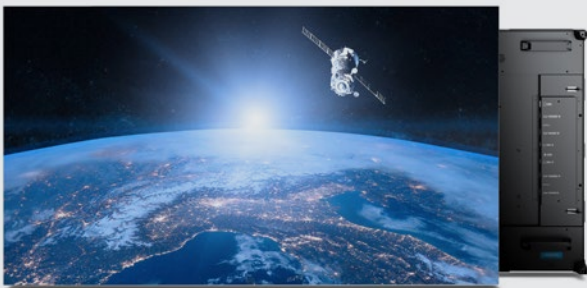


CINELUXE LED



CINEMASSIVE

CINELUXE LED VIDEO WALLS



CineMassive's series of CineLuxe LED video walls provide the optimal mix of brightness, fine pixel pitch, color uniformity, and reliability. Truly seamless, CineLuxe LED displays are engineered to deliver among the finest pixel densities in the industry, with pixel pitches as low as 0.9mm. Each large 54" display offers up to a 1280 x 720 resolution, providing a visually stunning and immersive experience. All CineLuxe LED video walls are designed for 24/7/365 operation, delivering the reliability and resiliency needed for mission-critical visualizations.

CINELUXE LED

OVERVIEW

Our 100% seamless CineLuxe LED video walls offer breathtaking, high-resolution images. The large 54" displays are available in pixel pitches as fine as 0.9mm and are certified for 24/7 operation. Premium options include touch technology and extended warranties.

LED Displays optimized for crystal-clear resolution

- 100% seamless
- Breathtaking image quality
- Brightness and color uniformity
- Large 54" panels
- 16:9 form factor
- Flat panel design
- Superior viewing angles
- Interactive touch technology*
- Built-in color and alignment test patterns
- Industry-leading 6000:1 contrast ratio

Electronics engineered for power efficiency

- Extremely efficient power consumption
- Multiple displays powered by 15-amp circuit
- Typical power consumption is only 132 watts

*Optional

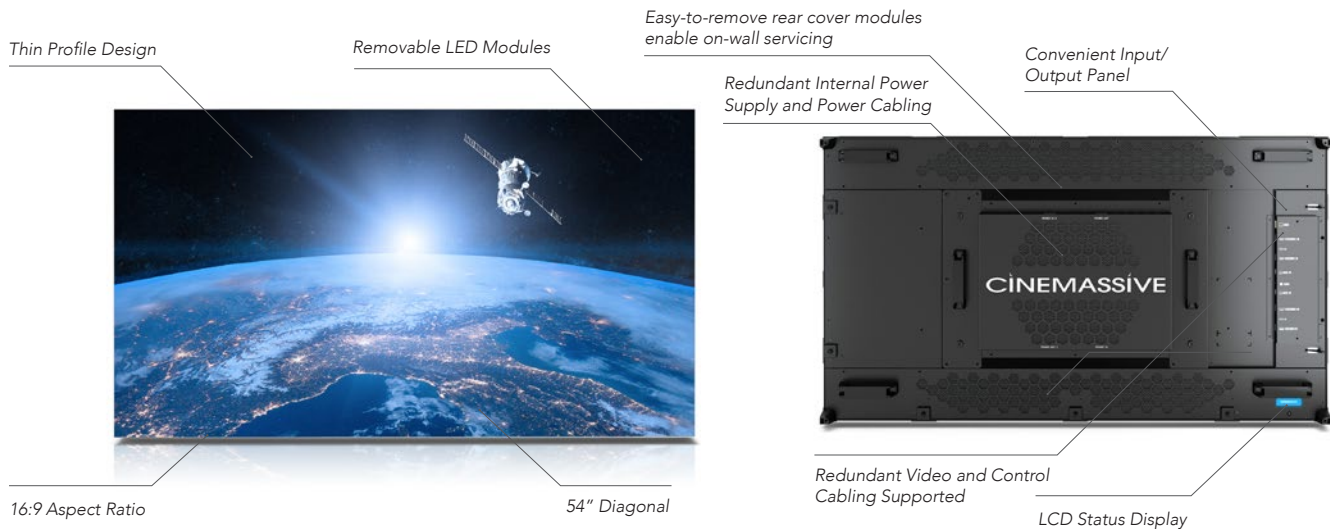
Designed for 24/7/365 mission-critical operation

- 100,000 hour LED Lifetime (typical)
- Integrated redundant power supply
- High-quality, professional-grade LEDs
- TAA compliant
- 24/7 remote and onsite GuardianCare support*
- Three-year warranty, extendable to four or five years

Mechanical components optimized for serviceability and environmental factors

- Locking, easy to align display frame
- LED modules individually serviceable
- Modular rear cover access allows on-wall maintenance
- Onscreen diagnostics and readout
- Fanless operation

THE NEXT GENERATION OF LED TECHNOLOGY



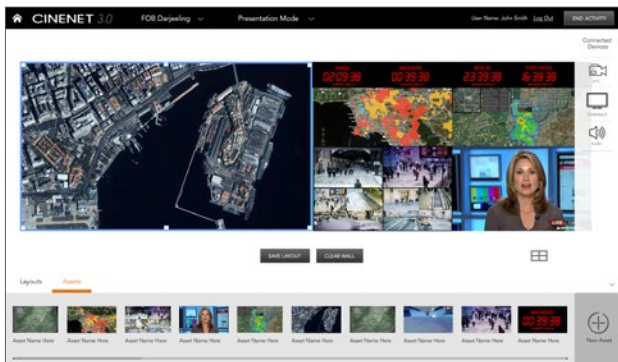
CineLuxe LED video walls are architected and manufactured by experts for the most demanding video wall applications. Purpose-built to address the challenges of many video wall implementations, CineLuxe LED video walls offer a redundant power supply, advanced serviceability features, and professional-grade LEDs.

CineLuxe displays use as much as 35% less power than other LED solutions. Multiple displays can be powered by a single 15-amp circuit, and typical power consumption is only 132 watts.

KEY FEATURES

- Industry-leading pixel pitches as fine as 0.9mm
- 100% seamless
- Redundant power supply
- Designed for 24/7/365 operation
- Large 54" displays
- Simplified content management through CineNet

INTUITIVE AND POWERFUL OPERATIONAL CONTROL



The content on CineLuxe displays is controlled using CineNet, CineMassive's industry-leading video wall management application. Users with advanced permissions can exercise complete control over the content displayed on the video wall using a browser-based, drag & drop interface. They can group, resize, stretch, or tile content over the desired displays at native resolution. Users can also annotate content with built-in whiteboarding, stream IP sources, create custom layouts, control external devices, and much more.

CineNet can also be configured to provide non-technical users with an ultra-simplified interface to complete a complex series

of pre-built tasks with the touch of a button, such as to power on the video wall, set the room lighting, enable the audio system, set the volume, and display a specific layout.

BRILLIANT IMAGE QUALITY

Perfect for areas with significant ambient light, CineLuxe displays offer stunning, high-resolution images. The commercial-grade, black solder mask component LEDs used within the display panels are of the highest quality. The LEDs present the deepest shade of black and allow unrivaled off-axis viewing angles. The 16:9 aspect ratio is compatible with the most commonly used resolutions, including both HD and 4K.



DESIGNED WITH INSTALLATION AND SERVICEABILITY IN MIND

Each CineLuxe LED display has twenty potential alignment points, allowing flawless alignment and images that span displays continuously. The large 54" display size means most video walls require fewer individual panels, reducing installation time and points of future service. The LED's onscreen diagnostics allow service staff to quickly access the information they need.

The CineLuxe display has a uniquely designed rear cover with modular sections that eliminates the need to dismount the display from the wall and remove the entire back cover for component servicing.

SPECS

	CineLuxe LED 0.9mm	CineLuxe LED 1.2mm	CineLuxe LED 1.8mm
LED Display			
Viewable Image Size (Diagonal)	54.21 in		
Seam Size	0.0 mm (100% Seamless)		
Pixel Pitch	0.9375 mm	1.25 mm	1.875 mm
Native Resolution	1280 x 720	960 x 540	640 x 360
Pixels Per Square Foot	105,700	59,450	26,422
Refresh Rate	1,920 Hz	3,000 Hz	5,100 Hz
Modules Per Display	40 (10 x 4)	20 (5 x 4)	
Brightness	600 nits	800 nits	
Brightness Uniformity	>97%		
Color Uniformity	>97%		
Color Gamut	100% NTSC		
Color Temperature	3,200 - 9,300K		
Contrast Ratio	>6,000:1		
LED Type	3-in-1 Black SMD, Commercial-Grade		
Aspect Ratio	16:9		
Video Frame Rate Supported	50, 60 Hz		
Viewing Angle, H/V	160°/140°		
Acoustic Noise	Fanless		
Connectivity			
Video Inputs / Outputs	2x HDMI / 2x HDMI		
Max Video Input Resolution	1920 x 1080 @ 60Hz		
Control	RS-232, IP, CineNet and 3rd Party Control Compatible		
Electrical & Operational			
Power Consumption, Typical (watts)	132 W		
Power Consumption, Max (watts)	440 W		
BTU (Typical)	450 per hour		
BTU (Max)	1500 per hour		
Voltage Range	100-240V AC, 50-60 Hz, Auto-Ranging		
Operating Temperature	-14° to 104° F		
Operating Environment	Indoor		
Redundant Power Supply	Included		
Mounting	Rear Service		
Run-Time Rating	24/7/365		
LED Lifetime, Typical	100,000 hours		
Memory, Content Retention	Memory is volatile, all onscreen content lost within seconds of power loss		
Status Reporting & Diagnostics	LCD Status Indicator Readout on Each Display, Software Alerts via RS232, LAN		
Physical			
Dimensions (Without Mount) (W x H x D)	47.24 x 26.57 x 3.94 in		
Weight (Without Mount)	66.1 lb		
Shipping weight	354 lb (3 to a crate)		
Shipping Dimensions (W x H x D)	63 x 39 x 44 in (3 to a crate)		
Compliance	NRTL UL 60950-1, FCC Class A, CE EN 60950-1, EN 55032 Class A, EN 55024, WEEE, CISPR 32/2015, IP30, TAA, HDCP, TUV		
Warranty			
Standard Warranty	3 Years		
Extended Warranty Options	4 or 5 Years, Available at Initial Purchase		
GuardianCare Coverage	Optional		

CINEMASSIVE

SCHEDULE A LIVE DEMO

1.844.891.6090

sales@cinemassive.com