



## Stryke

Fully-Ruggedized, Portable, Tactical Video Processor

The Stryke, integrated with the Command 360 visual collaboration platform, is a man-portable, tactical video processor designed for harsh environments. It allows operators in tents, rigid shelters, vehicles, hotel rooms, safe houses, and other environments to share a common operating picture with their teams and command. The Stryke enhances team collaboration, enabling the real-time sharing of multiple video streams and images within a room and across a network.

The combined power of the Stryke and Command 360 delivers unmatched situational awareness and real-time decision-making capabilities for mission-critical environments around the world. The Stryke also integrates with our industry-leading CineNet video wall management platform.



## Why Stryke?

The Stryke opens up a new world to those running and performing tactical operations. Pre-loaded with Command 360 or CineNet software depending on your organization's preference, users will find it intuitive and effective.

It works well in extreme temperatures and can withstand shock and vibration during transport and use. The Stryke works with any display, sets up in minutes, and is maintenance-free.

The Stryke is available stand-alone, as part of a core package, or with a 2x2 22" industrial grade LCD display. It's also available with a portable, all-in-one, 3x1 LCD video wall package that includes three 17.3" LCD displays and built-in power supply in a single ruggedized transport case.



### SIZE, WEIGHT, AND POWER

The Stryke is small and lightweight so you can easily carry it in a backpack. It also has very flexible power requirements.

- Backpack-portable
- 12 lbs .5 oz
- 10.4" x 8.1" x 3.9"
- 100 - 240V AC
- 24V DC
- BA-5590/BA-2590 battery backup-ready

### RUGGED

Wherever your next operation will take you, your equipment must perform flawlessly.

- Fanless, no moving parts
- Also available with a fan attachment that delivers twice the performance - up to 16 concurrent decodes.
- -13° to 105°F operating temperature
- Designed to withstand temperature shock
- Vibration-resistant - can use in moving vehicle
- Stable, reliable 24/7 performance
- MIL-STD-810G certification pending
- Conformal coating resists humidity and dust

### MISSION-READY

In a critical situation, you need to set up your processor quickly and it must be easy to operate, as this can mean the difference between success and failure.

- Sets up in minutes
- Maintenance-free
- (4) 4K HDMI inputs & outputs - works with projectors, LCD, & LED displays
- Designed to MIL-STD-461E for EMI

**SYSTEM CONFIGURATION**

CPU	Intel Core i7-9850 HL
OPERATING SYSTEM	Windows 10 IoT Enterprise 2021 LTSC HighEnd and Windows 11 Ready

**IP DECODING**

MAXIMUM CONCURRENT H.264 DECODES	8 x 1080p30 (1920x1080) @ 30Hz With fan attachment 16 x 1080p30 (1920x1080) @ 30Hz
----------------------------------	---

**VIDEO OUTPUTS**

MAXIMUM OUTPUTS	4 x 4K (3840 x 2160) @ 60Hz, HDMI
ADDITIONAL OUTPUT FORMATS SUPPORTED	DisplayLink over USB-C for Control Point

**VIDEO INPUTS**

MAXIMUM INPUTS	Up to 4 x 4K (3840 x 2160) @ 30Hz, HDMI
----------------	---

**PHYSICAL**

DIMENSIONS (W X H X D)	10.4 x 8.1 x 3.9 inches
WEIGHT	12 lbs. 5 oz

**POWER**

POWER SUPPLY	85W to 120W Max
AC/DC INPUT VOLTAGE	100 - 240V AC / 24V DC
BATTERY COMPATIBILITY	BA-5590 & BA-2590

**ENVIRONMENTAL**

OPERATING TEMPERATURE RANGE	-13° to 105°F (-25° to 38°C)
STORAGE TEMPERATURE RANGE	-40° to 203°F (-40° to 95°C)
OPERATING/STORAGE HUMIDITY	5-95% non-condensing
PROTECTIVE CONFORMAL COATING	HumiSeal® 1B73
OPERATING ENVIRONMENT	Harsh and climate-controlled environments

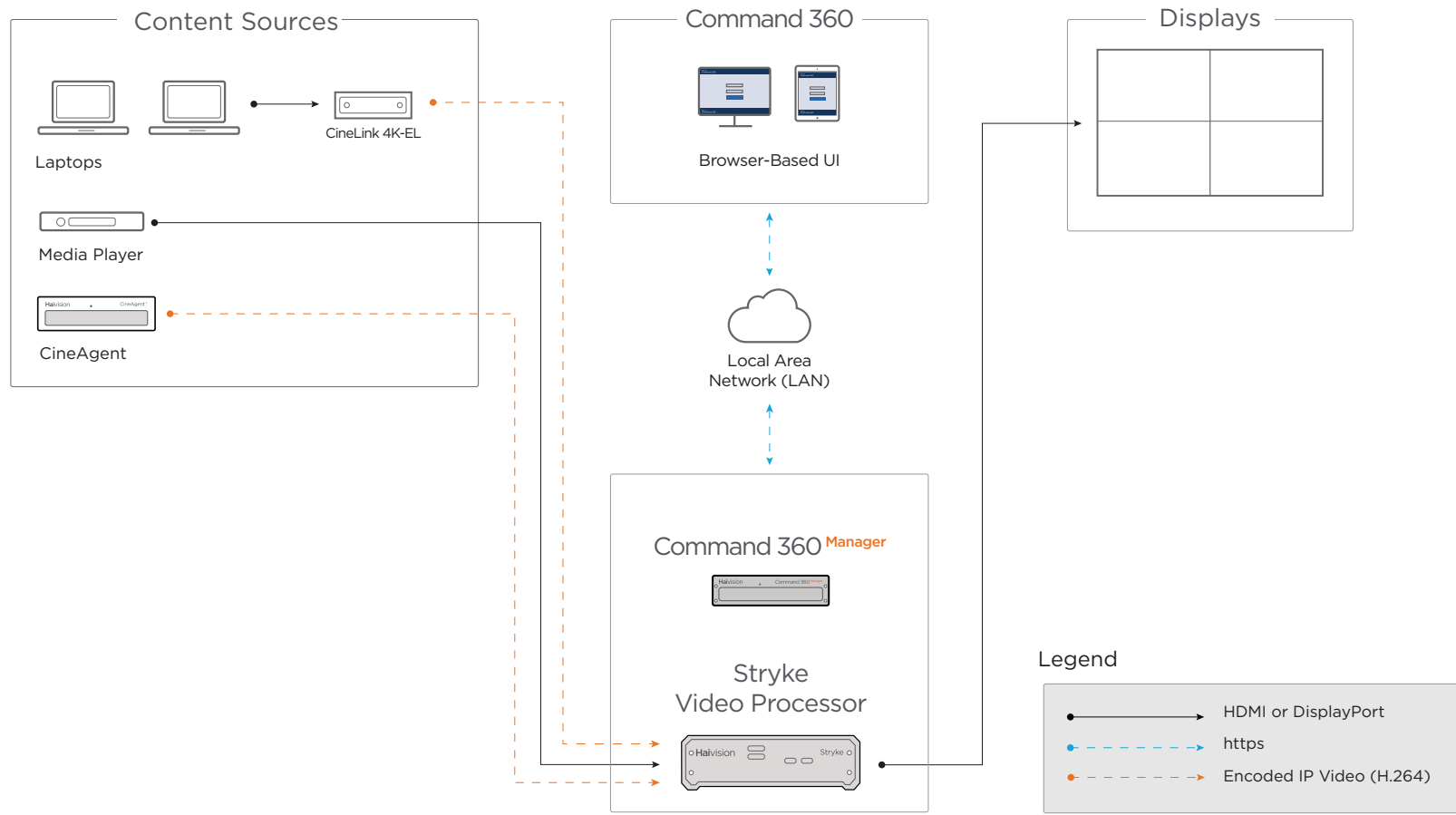
**STANDARDS AND CERTIFICATIONS**

MIL-STD-461E	Designed to Meet
MIL-STD-810G	Designed to meet high temperature, low temperature, temperature shock, vibration, shock Pending certification

**OTHER**

COOLING	Passive Optional fan attachment available.
MOVING PARTS	None
MAINTENANCE	None
RACK-MOUNTABLE	No
OPTIONAL CORE KIT	All equipment packed into custom-cut foam inserts; remove components from case before use

## SIGNAL FLOW DIAGRAM



HAIVISION IS TRUSTED BY ORGANIZATIONS WORLDWIDE



GSA Schedule GS-35F-0537U

SCHEDULE A LIVE DEMO

1.844.891.6090

sales@haivisionmcs.com